

**County Health  
Rankings & Roadmaps**

Building a Culture of Health, County by County

A Robert Wood Johnson Foundation program

# 2014 *Rankings* Florida



A collaboration between the Robert Wood Johnson Foundation and the University of Wisconsin Population Health Institute.



Support provided by

Robert Wood Johnson  
Foundation



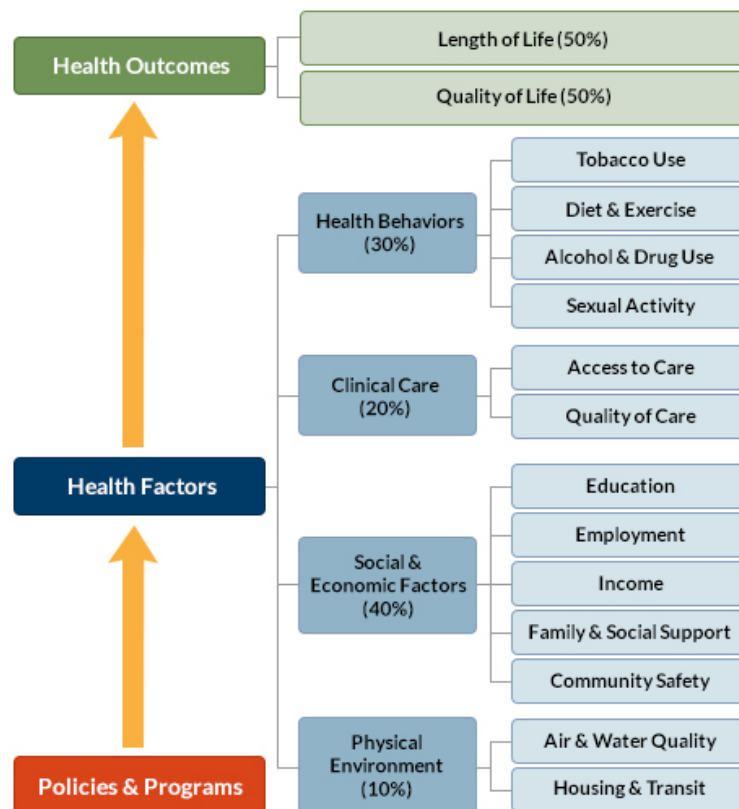
INSIDE FRONT COVER – INTENTIONALLY BLANK

## INTRODUCTION

The *County Health Rankings & Roadmaps* program helps communities identify and implement solutions that make it easier for people to be healthy in their schools, workplaces, and neighborhoods. Ranking the health of nearly every county in the nation, the *County Health Rankings* illustrate *what we know* when it comes to what is making people sick or healthy. The *Roadmaps* show *what we can do* to create healthier places to live, learn, work, and play. The Robert Wood Johnson Foundation (RWJF) collaborates with the University of Wisconsin Population Health Institute (UWPHI) to bring this program to cities, counties, and states across the nation.

## WHAT ARE THE COUNTY HEALTH RANKINGS?

The *County Health Rankings* measure the health of nearly every county in the nation. Published online at [countyhealthrankings.org](http://countyhealthrankings.org), the *Rankings* help counties understand what influences how healthy residents are and how long they will live. The *Rankings* look at a variety of measures that affect health, such as high school graduation rates, access to healthy foods, rates of smoking, obesity, and teen births. Based on data available for each county, the *Rankings* are unique in their ability to measure the overall health of each county in all 50 states. They have been used to garner support for local health improvement initiatives among government agencies, healthcare providers, community organizations, business leaders, policy makers, and the public.



## HOW ARE PEOPLE USING THE RANKINGS?

- Ø Highlighting community success
- Ø Identifying root causes of poor health
- Ø Supporting policy change
- Ø Engaging communities in health improvement

For more information, visit [countyhealthrankings.org](http://countyhealthrankings.org)

## WHAT ARE THE ROADMAPS TO HEALTH?

The *Roadmaps to Health* help communities bring people together to look at the many factors that influence health, select strategies that work, and make changes that will have a lasting impact. The *Roadmaps* focus on helping communities determine what they can do and what they can learn from others.

### What You Can Do

The *Roadmaps to Health* Action Center provides step-by-step guides, tools, and webinars to help groups working to improve the health of their communities. Community Coaches also provide customized consultation to local communities that have demonstrated a willingness to address factors that we know influence health, such as education, income, and community safety.

The Action Center also features *What Works for Health* – a searchable database of evidence-informed policies and programs that can improve health.

### Learning From Others

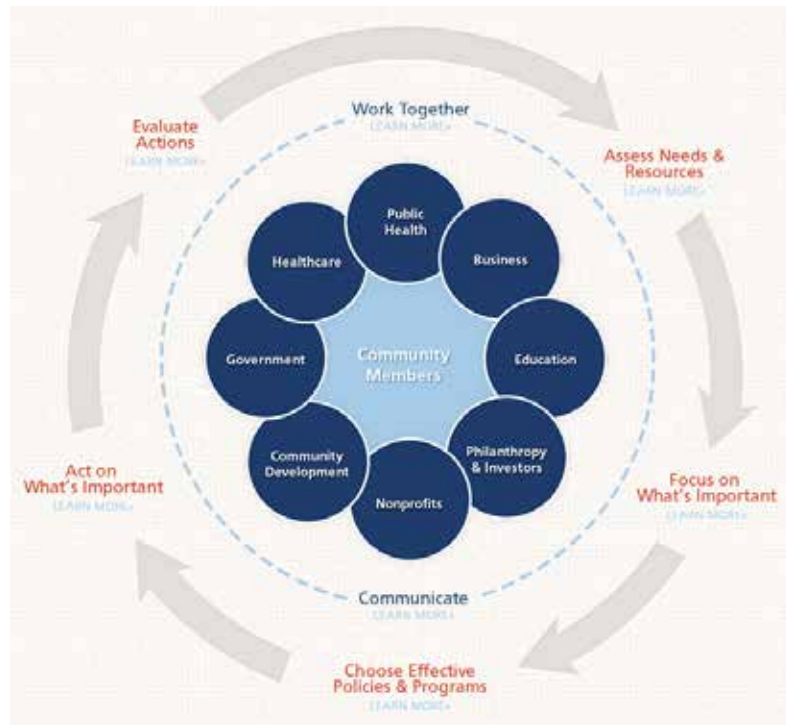
Honoring the efforts of communities working at the forefront of health improvement, the Robert Wood

Johnson Foundation annually awards the *RWJF Culture of Health Prize* to outstanding communities that are working toward better health. The *Prize* recognizes communities with strong and diverse partnerships that are coming together with a shared vision and commitment to address multiple factors that affect health and make lasting changes that create a culture of health for all. Visit [countyhealthrankings.org](http://countyhealthrankings.org) or [rwjf.org/prize](http://rwjf.org/prize) to learn about the work of past prize winners.

At [countyhealthrankings.org](http://countyhealthrankings.org), we also feature stories from communities across the nation who have used data from the *County Health Rankings* or have engaged in strategies to improve health. For example, you can learn from the successes and challenges of the 30 *Roadmaps to Health* Community Grantees. These grantees are working to create positive policy or systems changes that address social and economic factors that influence how healthy people are and how long they live, such as education and community safety. You might also want to contact your local affiliate of United Way Worldwide, the National Business Coalition on Health, or the National Association of Counties - their national parent organizations have partnered with us to raise awareness and stimulate action to improve health in their local members' communities.

## How can you get involved?

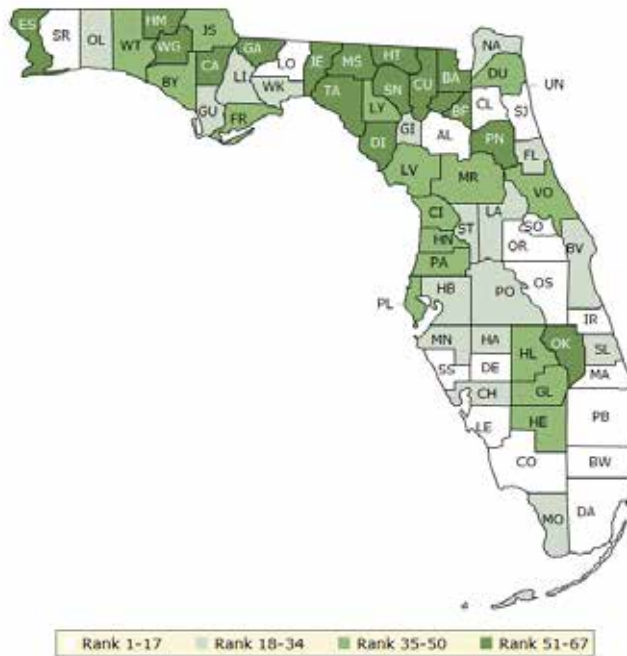
In communities large and small, people from all walks of life are taking ownership and action to improve health. Visit [countyhealthrankings.org](http://countyhealthrankings.org) to get ideas and guidance on how you can take action in your community. Working with others, you can improve the health of your community.



The green map below shows the distribution of Florida's **health outcomes**, based on an equal weighting of length and quality of life.

Lighter colors indicate better performance in the respective summary rankings. Detailed information on the underlying measures is available on our web site.

### HEALTH OUTCOMES RANKS

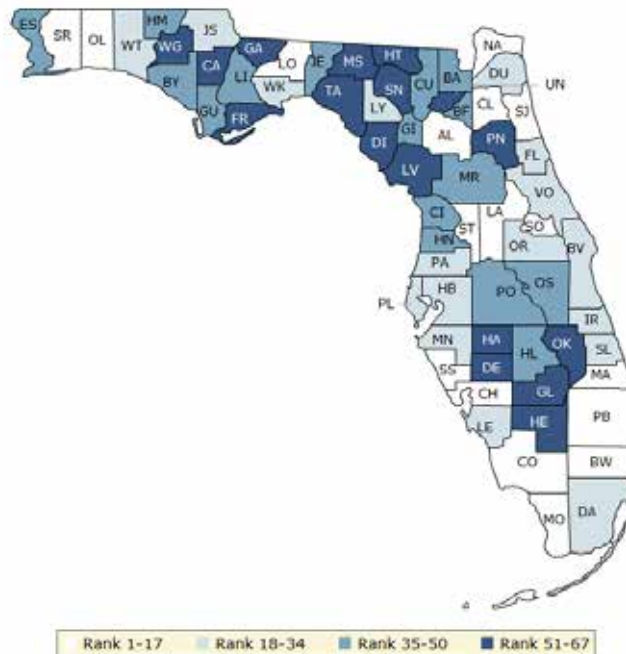


County	Rank	County	Rank	County	Rank	County	Rank
Alachua	17	Franklin	36	Lee	11	Pinellas	35
Baker	64	Gadsden	61	Leon	9	Polk	28
Bay	48	Gilchrist	33	Levy	49	Putnam	65
Bradford	59	Glades	38	Liberty	32	Santa Rosa	6
Brevard	25	Gulf	34	Madison	56	Sarasota	8
Broward	14	Hamilton	63	Manatee	22	Seminole	3
Calhoun	54	Hardee	23	Marion	41	St. Johns	1
Charlotte	27	Hendry	40	Martin	4	St. Lucie	24
Citrus	44	Hernando	50	Miami-Dade	5	Sumter	30
Clay	7	Highlands	37	Monroe	20	Suwannee	53
Collier	2	Hillsborough	31	Nassau	26	Taylor	60
Columbia	55	Holmes	51	Okaloosa	19	Union	67
DeSoto	10	Indian River	13	Okeechobee	52	Volusia	43
Dixie	62	Jackson	47	Orange	12	Wakulla	29
Duval	45	Jefferson	58	Osceola	15	Walton	46
Escambia	57	Lafayette	39	Palm Beach	16	Washington	66
Flagler	21	Lake	18	Pasco	42		

The blue map displays Florida's summary ranks for **health factors**, based on weighted scores for health behaviors, clinical care, social and economic factors, and the physical environment.

Lighter colors indicate better performance in the respective summary rankings. Detailed information on the underlying measures is available on our web site.

### HEALTH FACTORS RANKS



County	Rank	County	Rank	County	Rank	County	Rank
Alachua	2	Franklin	52	Lee	23	Pinellas	18
Baker	43	Gadsden	63	Leon	9	Polk	37
Bay	38	Gilchrist	41	Levy	51	Putnam	67
Bradford	45	Glades	55	Liberty	48	Santa Rosa	14
Brevard	21	Gulf	49	Madison	61	Sarasota	4
Broward	7	Hamilton	62	Manatee	20	Seminole	3
Calhoun	56	Hardee	58	Marion	40	St. Johns	1
Charlotte	17	Hendry	65	Martin	5	St. Lucie	33
Citrus	36	Hernando	35	Miami-Dade	25	Sumter	11
Clay	13	Highlands	44	Monroe	15	Suwannee	54
Collier	8	Hillsborough	24	Nassau	12	Taylor	60
Columbia	50	Holmes	46	Okaloosa	10	Union	53
DeSoto	57	Indian River	22	Okeechobee	64	Volusia	32
Dixie	66	Jackson	31	Orange	19	Wakulla	28
Duval	30	Jefferson	47	Osceola	42	Walton	29
Escambia	39	Lafayette	34	Palm Beach	6	Washington	59
Flagler	27	Lake	16	Pasco	26		

## Summary Health Outcomes & Health Factors Rankings

Counties receive two ranks:

- Health Outcomes
- Health Factors

Each of these ranks represents a weighted summary of a number of measures.

Health outcomes represent how healthy a county is while health factors represent what influences the health of the county.

Rank	Health Outcomes	Rank	Health Factors
1	St. Johns	1	St. Johns
2	Collier	2	Alachua
3	Seminole	3	Seminole
4	Martin	4	Sarasota
5	Miami-Dade	5	Martin
6	Santa Rosa	6	Palm Beach
7	Clay	7	Broward
8	Sarasota	8	Collier
9	Leon	9	Leon
10	DeSoto	10	Okaloosa
11	Lee	11	Sumter
12	Orange	12	Nassau
13	Indian River	13	Clay
14	Broward	14	Santa Rosa
15	Osceola	15	Monroe
16	Palm Beach	16	Lake
17	Alachua	17	Charlotte
18	Lake	18	Pinellas
19	Okaloosa	19	Orange
20	Monroe	20	Manatee
21	Flagler	21	Brevard
22	Manatee	22	Indian River
23	Hardee	23	Lee
24	St. Lucie	24	Hillsborough
25	Brevard	25	Miami-Dade
26	Nassau	26	Pasco
27	Charlotte	27	Flagler
28	Polk	28	Wakulla
29	Wakulla	29	Walton
30	Sumter	30	Duval
31	Hillsborough	31	Jackson
32	Liberty	32	Volusia
33	Gilchrist	33	St. Lucie
34	Gulf	34	Lafayette
35	Pinellas	35	Hernando
36	Franklin	36	Citrus
37	Highlands	37	Polk
38	Glades	38	Bay
39	Lafayette	39	Escambia
40	Hendry	40	Marion

Rank	Health Outcomes	Rank	Health Factors
41	Marion	41	Gilchrist
42	Pasco	42	Osceola
43	Volusia	43	Baker
44	Citrus	44	Highlands
45	Duval	45	Bradford
46	Walton	46	Holmes
47	Jackson	47	Jefferson
48	Bay	48	Liberty
49	Levy	49	Gulf
50	Hernando	50	Columbia
51	Holmes	51	Levy
52	Okeechobee	52	Franklin
53	Suwannee	53	Union
54	Calhoun	54	Suwannee
55	Columbia	55	Glades
56	Madison	56	Calhoun
57	Escambia	57	DeSoto
58	Jefferson	58	Hardee
59	Bradford	59	Washington
60	Taylor	60	Taylor
61	Gadsden	61	Madison
62	Dixie	62	Hamilton
63	Hamilton	63	Gadsden
64	Baker	64	Okeechobee
65	Putnam	65	Hendry
66	Washington	66	Dixie
67	Union	67	Putnam



## 2014 County Health Rankings: Measures, Data Sources, and Years of Data

	Measure	Data Source	Years of Data
<b>HEALTH OUTCOMES</b>			
<b>Length of Life</b>	Premature death	National Center for Health Statistics	2008-2010
<b>Quality of Life</b>	Poor or fair health	Behavioral Risk Factor Surveillance System	2006-2012
	Poor physical health days	Behavioral Risk Factor Surveillance System	2006-2012
	Poor mental health days	Behavioral Risk Factor Surveillance System	2006-2012
	Low birthweight	National Center for Health Statistics	2005-2011
<b>HEALTH FACTORS</b>			
<b>HEALTH BEHAVIORS</b>			
<b>Tobacco Use</b>	Adult smoking	Behavioral Risk Factor Surveillance System	2006-2012
<b>Diet and Exercise</b>	Adult obesity	National Center for Chronic Disease Prevention and Health Promotion	2010
	Food environment index	USDA Food Environment Atlas, Map the Meal Gap	2010-2011
	Physical inactivity	National Center for Chronic Disease Prevention and Health Promotion	2010
	Access to exercise opportunities	OneSource Global Business Browser, Delorme map data, ESRI, & US Census Tigerline Files	2010 & 2012
<b>Alcohol and Drug Use</b>	Excessive drinking	Behavioral Risk Factor Surveillance System	2006-2012
	Alcohol-impaired driving deaths	Fatality Analysis Reporting System	2008-2012
<b>Sexual Activity</b>	Sexually transmitted infections	National Center for HIV/AIDS, Viral Hepatitis, STD, and TB prevention	2011
	Teen births	National Center for Health Statistics	2005-2011
<b>CLINICAL CARE</b>			
<b>Access to Care</b>	Uninsured	Small Area Health Insurance Estimates	2011
	Primary care physicians	HRSA Area Resource File	2011
	Dentists	HRSA Area Resource File	2012
	Mental health providers	CMS, National Provider Identification	2013
<b>Quality of Care</b>	Preventable hospital stays	Medicare/Dartmouth Institute	2011
	Diabetic screening	Medicare/Dartmouth Institute	2011
	Mammography screening	Medicare/Dartmouth Institute	2011
<b>SOCIAL AND ECONOMIC FACTORS</b>			
<b>Education</b>	High school graduation	data.gov, supplemented with National Center for Education Statistics	2010-2011
	Some college	American Community Survey	2008-2012
<b>Employment</b>	Unemployment	Bureau of Labor Statistics	2012
<b>Income</b>	Children in poverty	Small Area Income and Poverty Estimates	2012
<b>Family and Social Support</b>	Inadequate social support	Behavioral Risk Factor Surveillance System	2005-2010
	Children in single-parent households	American Community Survey	2008-2012
<b>Community Safety</b>	Violent crime	Uniform Crime Reporting - FBI	2009-2011
	Injury deaths	CDC WONDER	2006-2010
<b>PHYSICAL ENVIRONMENT</b>			
<b>Air and Water Quality</b>	Air pollution - particulate matter <sup>1</sup>	CDC WONDER	2011
	Drinking water violations	Safe Drinking Water Information System	FY 2012-2013
<b>Housing and Transit</b>	Severe housing problems	HUD, Comprehensive Housing Affordability Strategy	2006-2010
	Driving alone to work	American Community Survey	2008-2012
	Long commute – driving alone	American Community Survey	2008-2012

<sup>1</sup> Not available for AK and HI.

CREDITS

**Report Authors**

University of Wisconsin-Madison  
School of Medicine and Public Health  
Department of Population Health Sciences  
Population Health Institute

Bridget Catlin, PhD, MHSA  
Amanda Jovaag, MS  
Julie Willems Van Dijk, PhD, RN  
Patrick Remington, MD, MPH

This publication would not have been possible without the following contributions:

***Data***

Centers for Disease Control and Prevention: National Center for Health Statistics and Division of Behavioral Surveillance  
Dartmouth Institute for Health Policy & Clinical Practice

***Research Assistance***

Jennifer Buechner  
Hyojun Park, MA  
Elizabeth Pollock  
Jennifer Robinson  
Matthew Rodock, MPH  
Anne Roubal, MS

***Communications and Outreach***

Burness Communications  
Alison Bergum, MPA  
Matthew Call  
Kate Konkle, MPH  
Kitty Jerome, MA  
Karen Odegaard, MPH  
Jan O'Neill, MPA

***Design***

Forum One, Alexandria, VA

***Robert Wood Johnson Foundation***

Abbey Cofsky, MPH – Senior Program Officer  
Michelle Larkin, JD, MS, RN – Assistant Vice-President, Program Portfolios  
Marjorie Paloma, MPH – Senior Policy Advisor  
James S. Marks, MD, MPH – Senior Vice-President and Director, Program Portfolios  
Joe Marx – Senior Communications Officer

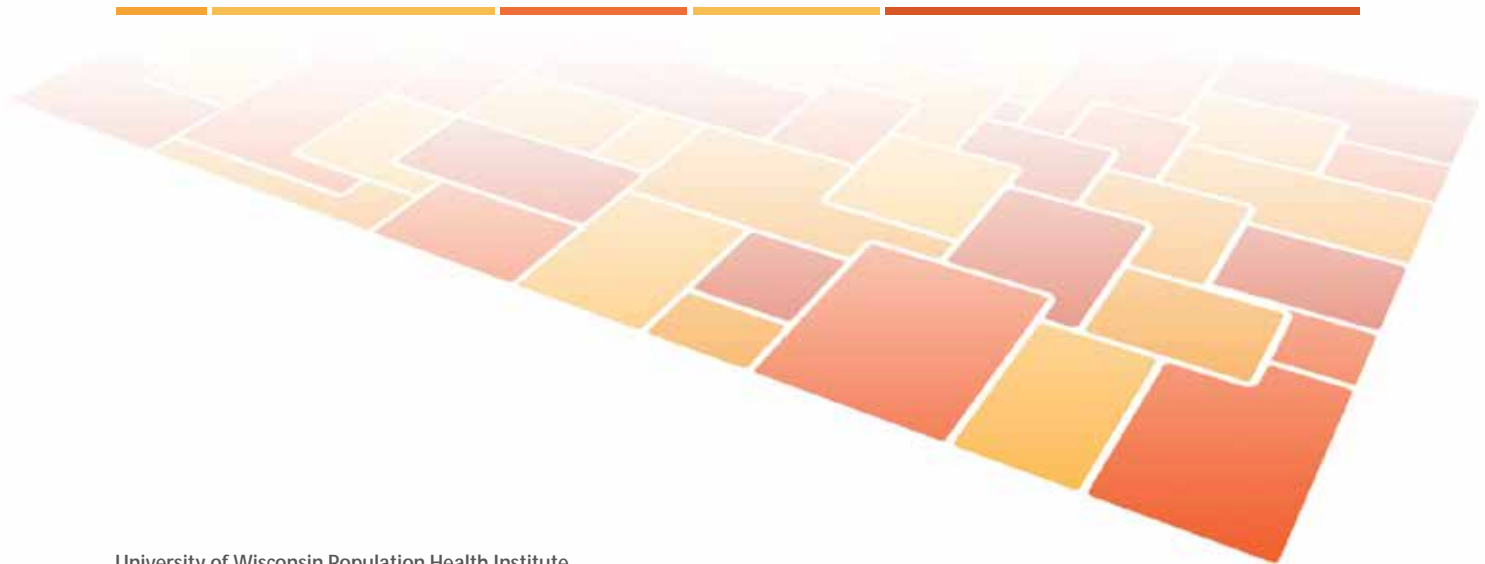
Suggested citation: University of Wisconsin Population Health Institute. *County Health Rankings 2014*.

INSIDE BACK COVER – INTENTIONALLY BLANK

# County Health Rankings & Roadmaps

Building a Culture of Health, County by County

[countyhealthrankings.org](http://countyhealthrankings.org)



University of Wisconsin Population Health Institute  
610 Walnut St, #524, Madison, WI 53726  
(608) 265-8240 / [info@countyhealthrankings.org](mailto:info@countyhealthrankings.org)

